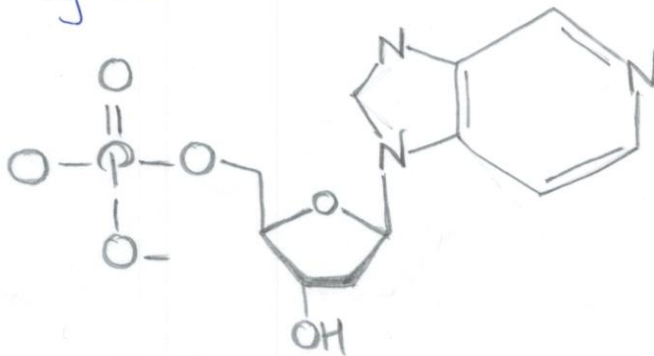


# NUCLEOTIDES

Nucleotides are organic molecules composed of a nitrogenous base, a pentose sugar & a phosphate. They serve as monomeric units of the nucleic acid polymers - deoxyribonucleic acid (DNA) & ribonucleic acid (RNA), both of which are essential biomolecules within all life-forms on Earth. Nucleotides are obtained in the diet & are also synthesized from common nutrients by the liver.



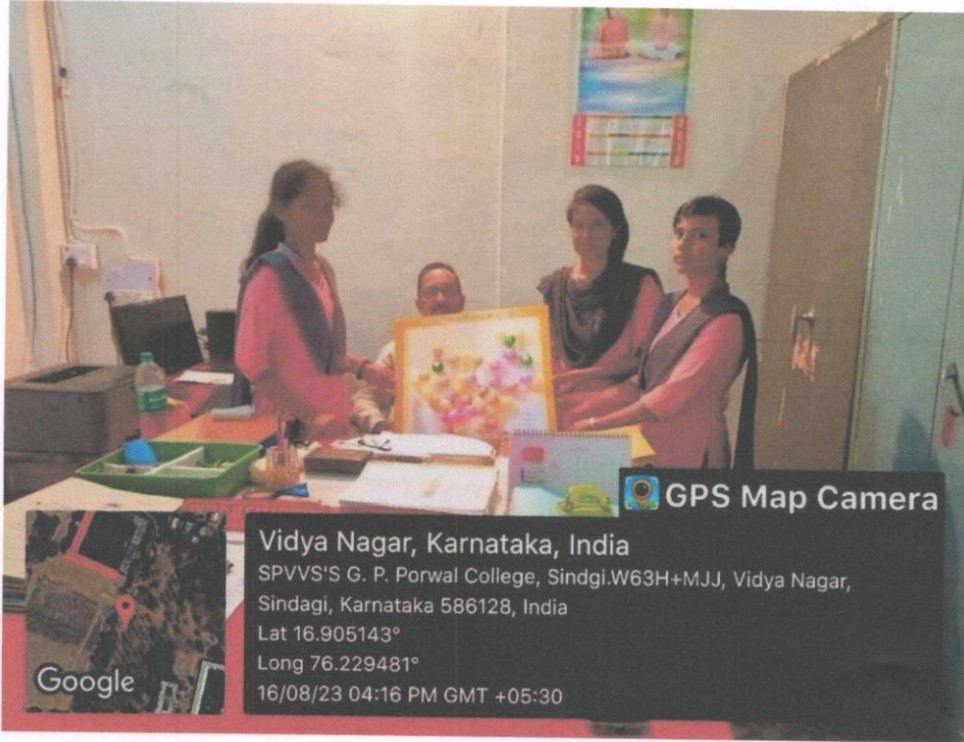
NUCLEOTIDE STRUCTURE

~~HOD~~  
Dept. of Zoology,  
G.P. Porwal Arts, Commerce & Science  
College, SINDAGI, Dist: Vijayapur

Co-ordinator IQAC

Nucleotides are composed of three subunit molecules: a nucleobase, a five-carbon sugar (ribose & deoxyribose), & a phosphate group consisting of one to three phosphate. The four nucleobases in DNA are guanine, adenine, cytosine & thymine; in RNA, uracil is used in place of thymine.

Nucleotides also play a central role in metabolism at a fundamental, cellular level. They provide chemical energy - in the form of the nucleoside triphosphate (GTP), cytidine triphosphate (CTP), Guanine triphosphate (GTP), throughout the cell for the many cellular functions that demand energy, including: amino acid, protein & cell membrane synthesis; moving the cell division etc.





SPVVSS

G.P. PORWAL ARTS, COMMERCE AND V.V. SALIMATH SCIENCE COLLEGE,  
SINDGI - 586 128 DIST: VIJAYAPUR

Dist: Vijayapur Affiliated to Rani Channamma University-Belagavi (Karnataka State)  
e-mail: gppprincipal@gmail.com Web: www.gppcollegesindgi.in Ph: 08488-221244

Department of **Zoology**

Programme Name: **Model Preparation** Class: **B.Sc-II-Sem**

Topic: **2022-2023** Date: / / 20

## Attendance Report

Sl. No.	UUCMS Number	Name of the Students	Sign
1	U15NB2250079	Almas J. Anand	Almas
2	U15NB2250091	Arnaz A. Salodagi	Arnaz
3	U15NB2250090	Neeta. Pattanabettu	Neeta
4	U15NB2250014	Shivaleela. S. Patil	Patil
5	U15NB2250026	Galakshmi	Galakshmi
6	U15NB2250106	Rakshita Jogum	Rakshita
7	U15NB2250074	Rutika pandit	Rutika
8	U15NB2250107	Afreen begum	Afreen
9	U15NB2250060	Paramod. J. Patil	Patil
10	U15NB2250024	Sadiq. Shaikh	Sadiq
11	U15NB2250066	Tamirben Yalaji	Tamirben
	U15NB2250065	Nida. Nada	Nida
	U15NB2250057	Sameera	Sameera
	U15NB2250075	Pushpalata	Pushpalata
	U15NB2250074	Janamma	Janamma
	U15NB2250073	Shuchi B.	Shuchi
	U15NB2250070	Sharhit. SK	Sharhit
	U15NB2250089	Vinod. C	Vinod
	U15NB2250070	Soyal. Balagauri	Soyal
	U15NB2250012	Prerna S. Naikodi	Prerna
	U15NB2250094	Apoorva. R. K.	Apoorva
	U15NB2250035	Maheshwari. S.M.	Maheshwari
	U15NB2250012	Ashwini. Yalnal	Ashwini
	U15NB2250070	Saniya. Biradar	Saniya
	U15NB2250073	Pallavi. S. Bumbas	Pallavi
	U15NB2250099	Akshata. Parashetti	Akshata
	U15NB2250085	Sushma. Biradar	Sushma

HOD

Dept. of Zoology,  
Porwal Arts, Commerce & Science  
College, SINDGI, Dist: Vijayapur

Co-ordinator IQAC

G. P. Porwal Arts, Comm & V. V. Salimath  
Science College, SINDGI-586128, Dt: Vijayapur

**G.P.PORAWAL ARTS COMMERCE & V.V.SALIMATH  
SCIENCE COLLEGE SINDAGI – 586128**

(Dist: Vijayapur) Affiliated to Rani Channamma University Belagavi (Karnataka State)

**MODEL OF NUCLEOTIDES**

**2022-23**

**Name of the Department:** ZOOLOGY

**Name of the Students** : Maheshwari, Apoorva, Ashwini

**Project Name** : Model of Nucleotides

**Class** : B.Sc II SEM

**Registration No** : U15NB22S0035, U15NB22S0094, U15NB22S0012

**Date :**

*SEM*  
**Co-ordinator IQAC**  
G. P. Porwal Arts, Comm & V. V. Salimath  
Science College, SINDAGI-586128. Dist: Vijayapur

*[Signature]*  
**Guided By**

**Prof: D. M. Sarashetti**  
HOD  
Dep. of Zoology,  
G. P. Porwal Arts, Commerce & Science  
College, SINDAGI. Dist: Vijayapur

*[Signature]*  
**Principal,**  
G. P. Porwal Arts, Comm. &